

Job Aid

BD FACSLyric™ System: Performing a daily clean and system shutdown

This job aid contains instructions for performing the daily clean procedure followed by a system shutdown. The daily clean procedure can be used to clean the system whenever needed. For additional information, see the *BD FACSLyric™ Reference System*.

Materials needed

- 1 tube containing 2 mL of bleach solution diluted to 0.5% sodium hypochlorite
- 1 tube containing approximately 3 mL of deionized (DI) water

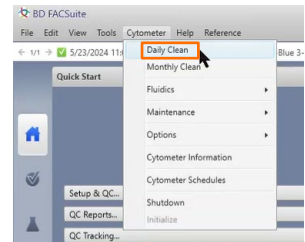


Caution! Do not use the same tube repeatedly for DI water or bleach during the daily cleaning procedure. Repeated use can cause wear on the tube, and resulting particles can damage the tube sensor in the manual tube port or BD FACS™ Universal Loader.



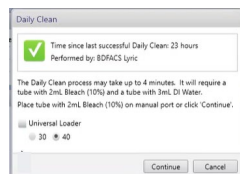
Running a daily cleaning

1. From the menu bar in the BD FACSuite™ Application, select **Cytometer > Daily Clean**.
2. Choose your loading option below to perform the cleaning.



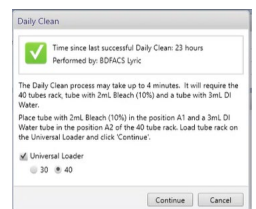
Using the manual tube port

- a) In the dialog, ensure the **Universal Loader** check box is clear.
- b) Load the bleach tube on the manual tube port, then click **Continue**.
- c) When prompted, remove the bleach tube, load the DI water tube, and click **Continue**.
- d) When prompted by the system, unload the DI water tube.
- e) Load a tube with 2 mL of DI water on the manual tube port.



Using the Loader

- a) In the dialog, select the **Universal Loader** check box and the appropriate rack option.
- b) Place the bleach tube in position A1 and the DI water tube in position A2 of the tube rack.
- c) Load the tube rack and click **Continue**.
NOTE Keep a tube of DI water on the manual port while the Loader is in use.



Shutting down the system

1. From the menu bar, select **Cytometer > Shutdown**.
2. Click **Yes**.
The power button blinks green for a few seconds, then the power to the system turns off and the power button turns amber.
3. Leave a tube containing 2 mL of DI water on the manual tube port.
4. Log out and exit the BD FACSuite™ Application.
5. Turn off the computer.

This material is for training purposes.
For Research Use Only. Not for use in diagnostic or therapeutic procedures.

BD Life Sciences, Milpitas, California, 95035, USA

bdbiosciences.com

BD, the BD Logo, FACS, BD FACSTFlow, BD FACSLyric and BD FACSuite are trademarks of Becton, Dickinson, and Company or its affiliates. ©2024 BD. All rights reserved. NPM-4320 (v1.0)

